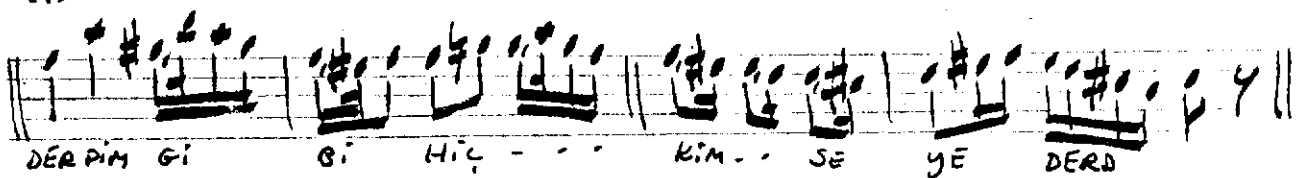
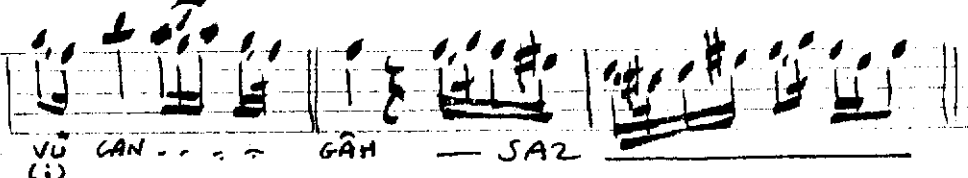
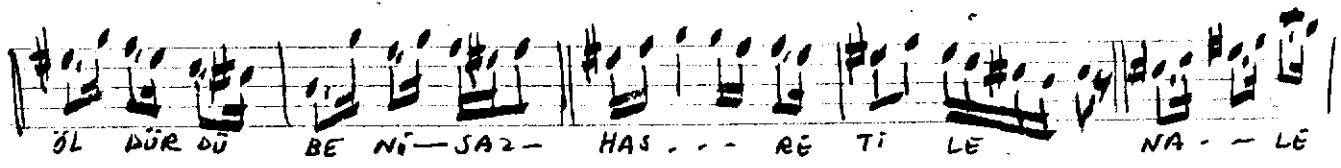
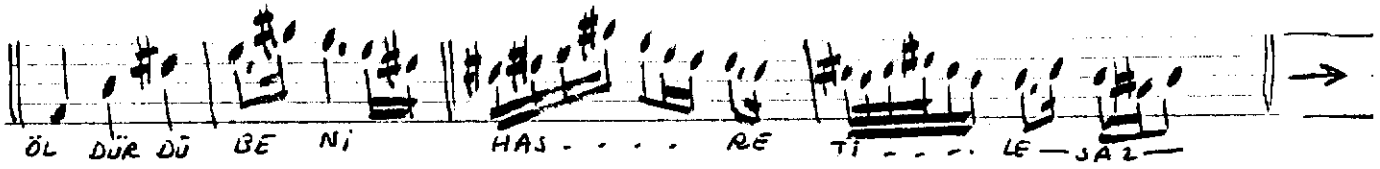
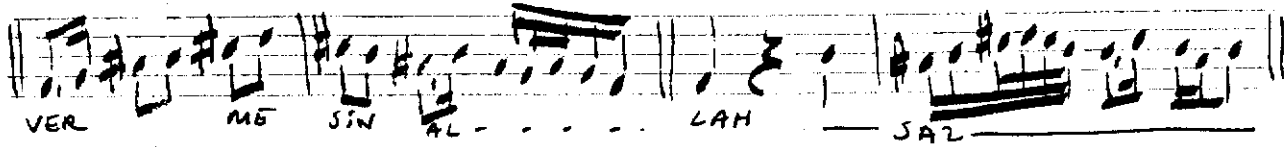
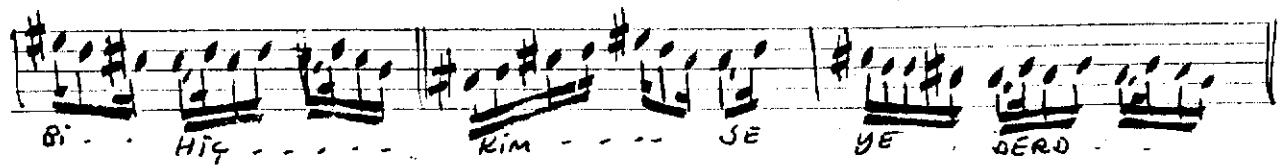
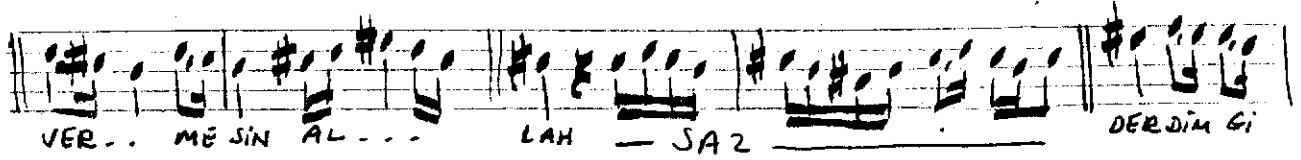
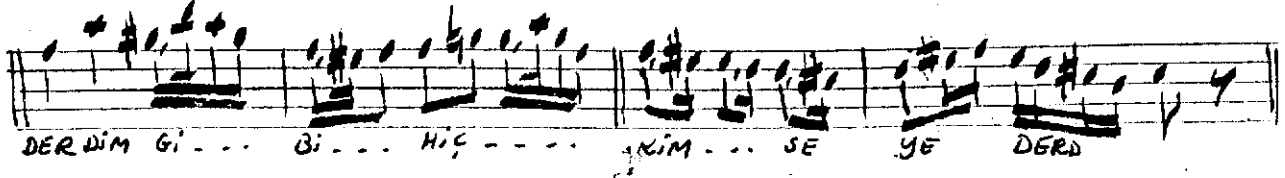
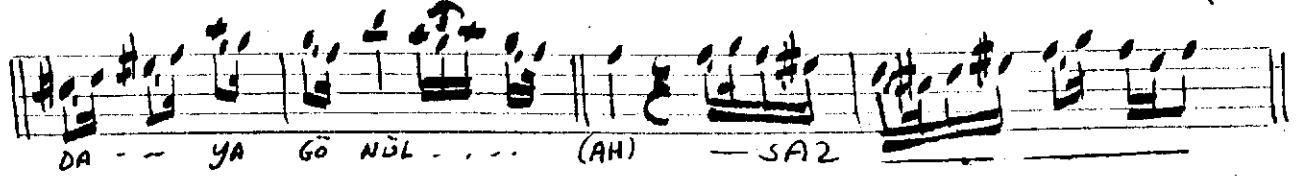


SENGİN

EVCARİ SARKI

KANUNİ NAZİM BEY



VER ME SIN AL - - - LAH - - - SAZ - - -

DER DİM Gİ Bİ HİÇ - - - KİM - - - SE YE

DERD - - - VER - - - ME SIN AL - - - LAH - - - SAZ - - -

KODASI

NA - - LE VÜ GAN - - - GAN - - - SAZ - - -

↳ Karşı sayfaya

Nüktetti yine âteş-i şevdâ-yı  
gönül âh.

Ulvi Ergüner'deki eski yazı defterden  
ayrım - kopya 20.9.1992

İsmail Koral

Not: Zemin sonunda  
güfte (âh) 12 bitmek içi -  
bedi'î. Asıl'da unutulmuş

Bir de (Nâle vü) değil  
(Nâle - i canğâh) olmalı.

Ok.